

- 1
- 2
- 3
- 4
- 5
- 6
- 7
- 8
- 9
- 10
- 11
- 12
- 13
- 14
- 15
- 16
- 17
- 18

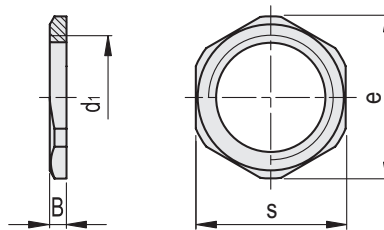
MATERIAL

Nickel-plated brass.

FEATURES AND APPLICATIONS

GH. nuts can be used for fitting the following indicators to reservoirs with thin walls (thickness smaller than 5 mm):

- HGFT. (see page 1188)
- HGFT-EX (see page 1189)
- GN 743 (see page 1190)
- GN 743.1 (see page 1190)
- GN 743.2 (see page 1191)
- GN 743.3 (see page 1192)
- GN 743.4 (see page 1193)
- GN 743.5 (see page 1193)
- GN 743.6 (see page 1196)
- HGFT-PR (see page 1198)
- HGFT-HT-PR (see page 1198)
- GN 744 (see page 1199)
- HFTX. (see page 1202)
- HFTX-PR (see page 1203)
- HCFE. (see page 1204)
- HCFE-C (see page 1204)
- HCFE-EX (see page 1205)



BSP

METRIC

Code	Description	d1	B	s	e	⚖
14991-NK	GH. 1/4-NK	G 1/4	3	15	16.5	6
15001-NK	GH. 3/8-NK	G 3/8	3	19	21	3
15011-NK	GH. 1/2-NK	G 1/2	4	24	26.5	7
15021-NK	GH. 3/4-NK	G 3/4	4	30	33	12
15031-NK	GH. 1-NK	G 1	4.5	37	40	14
15041-NK	GH. 1 1/4-NK	G 1 1/4	5	46	50.5	19
15051-NK	GH. 2-NK	G 2	6	65	71	40