



7 Port Managed USB 3.2 Gen 1 Hub w/ 15KV

ESD Surge Protection

Model No. **CG-7PU3MGD**

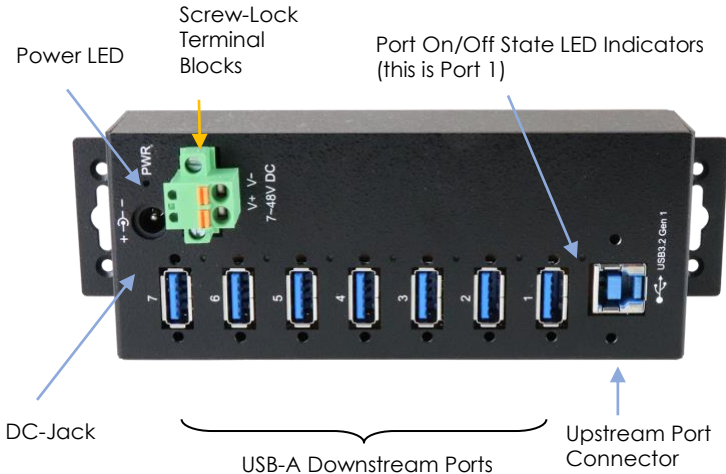
1. Introduction

Thank you for purchasing this 7-port Managed USB3.2 Gen 1 hub. The Super-speed Hub is supplied with managing software utilities which can turn on/off the bus power of each downstream device or even reset the entire hub by user or application programs. It enables the success of your critical USB applications instantly and improve your investment returns.

Features:

- ✓ Compliant with USB Specification 3.2 Gen 1
- ✓ Metal Case, DIN Rail and wall mountable
- ✓ Software Manageable Bus power for each Port
- ✓ Supports software utilities for Windows (XP and newer), Linux
- ✓ Provides 7 Downstream USB3.2 Gen 1 Facing Ports (see Note 1)
- ✓ Provides 7 LEDs Indicating each bus power states
- ✓ Supports 5Gbps (Super-speed), 480Mbps (High speed), 12Mbps (Full-speed) and 1.5Mbps (Low-speed) Speed
- ✓ Supports 15KV ESD Level 4 Protection for Each Port
- ✓ Supports +7~48V DC Wide Range Input Power
- ✓ Supports USB Battery Charging v1.2 : CDP, DCP modes

2. Connector Layout



1. **USB-A Downstream Facing Port Connectors:** There are 7 USB-A screw-lock connectors for standard USB3.2 Gen 1 and legacy USB2.0/1.1 devices.

Note 1: The last USB port (Port 7) of this hub does NOT support USB2.0/1.1 devices because it is used to communicate with the managing utilities. However, it still supports USB3.2 Gen 1 devices.

2. **USB-B Upstream Facing Port Connector:** The Type-B screw-lock connector from upstream USB3.2 Gen 1 port. It is connected from host or another USB3.2 hub's downstream facing port.
3. **Power LED:** Turns on indicates the hub was powered.
4. **Port State Indicator LEDs:** Each port has a LED next to it. When the LED is on, the USB device is enabled (connected). If the LED is off, the USB device is disabled (disconnected).
5. **Self Power Input Connectors:** The DC-Jack or 2-pin (one pin is for the positive voltage and the other pin is GND) screw-lock terminal

blocks is used to connect wide range power source to self-power the hub, the voltage can be in the range from +7V to 48V DC.

3. Hardware Installation

1. Use static electricity discharge precautions.

Remove possible static discharge potential from any objects that the hub may come in contact with before installation. This can be accomplished by touching a bare metal chassis rail after you have turned off the power.

2. Apply DC power (range from +7V to 48V) to the 2-pin Screw-Lock Terminal Block Connector.

 **Warning!!**

Please make sure the polarity of the input power should correctly match with the marking next to the terminal block pins

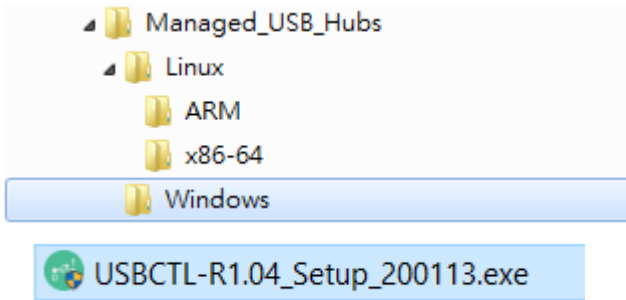
- The terminal blocks' Push-In mechanism allows you to push the wire directly into the contact hole and latched by its internal latch spring automatically.
- To remove the wire, you need a tool (such as a small flathead screwdriver) to release the internal latch spring then remove the wire as the following picture. If the wire is too soft to be inserted into the contact hole, you need to release the latch string with above tool, insert the wire then release the latch spring to latch the wire.



3. **Connecting USB Host cable:** The host cable can be a standard B-to-A or B-to-C USB3.2 Gen 1 cable (depends on the host port's connector type). Please connect the type-A (or Type-C) end connector of the cable to your USB host port, then connect the type-B end connector to this hub. Since the USB hub is plug-and-play, you don't have to turn off your host computer when installing the hub.
4. **Connect the USB devices to the downstream ports of this hub.**
5. **Install the USB Hub Administrator Utilities as described in the following chapter**

4. USB Hub Administrator Utilities Installation

The Hub supports managing utilities called **USB Hub Administrator** for major recent Windows (XP and above) and Linux:

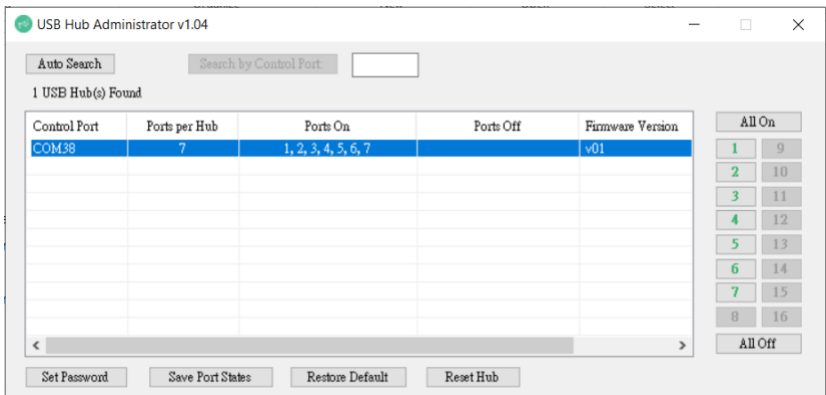


The above folders include the software for different platforms. If you are installing it on Windows, please find the executable setup program in Windows folder, double-click it:

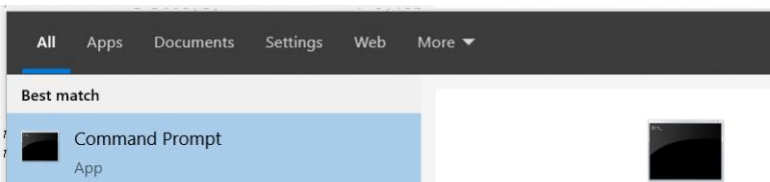


1. Please follow the on-screen instructions of the setup program to complete the installation. After installed, it will launch the utility automatically:

- Click **Auto Search** to find all Managed USB Hubs
- Click the item on the list to select the Hub to control
- Click on the numeric (indicate the Port number) button to turn On/Off the USB port
- You can save the current port states by clicking the **Save Port States** button



2. To use the console utility CUSBC to control the USB devices, please run Command Prompt as follows:



To see all CUSBC commands, type:

CUSBC /?

```
CUSBC v1.03
Usage: CUSBC command [password] [argument]
command:
  /Q      query (no password is required)
Usage:   CUSBC /Q [option]
```

To query all Hubs connected:

CUSBC /Q

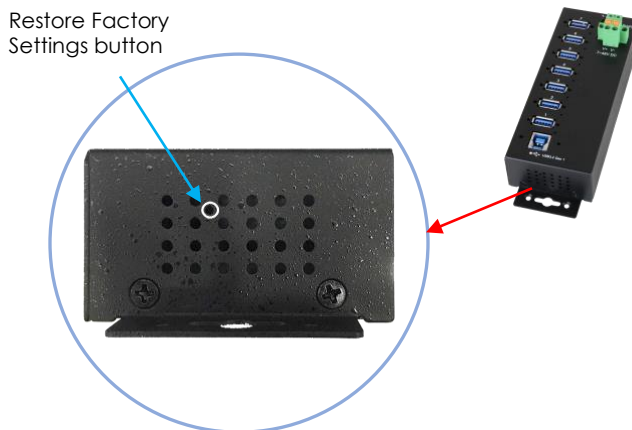
```
C:\>CUSBC /Q
1 USB Managed Hub(s) Found.
COM38, 7 ports, On=1,2,3,4,5,6,7, Off=None, FW=v01
```

5. Restore to Factory Settings

To perform a factory reset:

1. Verify that your hub's Power LED is off.

2. On the side of your hub, locate the hole of the Restore Factory Settings button:



3. Use a paper clip or similar object to press and hold the Restore Factory Settings button, while still holding the button power on the hub.
4. Release the Restore Factory Settings button.
5. Your hub resets to its factory default settings:
 - All ports are On
 - The password: **pass**

6. Environmental Specifications

Operating temp.: 0 to 55°C (32 to 131°F)

Operating humidity: 5 to 95% RH

Dimensions (LxWxH): 163 x 55.0 x 31.2 mm
(6.41 x 2.16 x 1.22 in)