

# PM Series 5 Tumbler Miniature Snap-in Switchlocks



Models Available

## Features/Benefits

- International agency listings
- Snap-in mounting
- Wire lead terminations available
- 5 Tumbler lock with positive detent

## Typical Applications

- Computers
- Point-of-sale terminals
- Marine equipment

## Specifications

CONTACT RATING: Q contact material: 4 AMPS @ 125 V AC or 28 V DC; 2 AMPS @ 250 V AC (UL/CSA); 4 AMPS @ 125 V AC, 2 AMPS @ 250 V AC, T65 (VDE). See page L-28 for additional ratings.

ELECTRICAL LIFE: 10,000 make-and-break cycles at full load.

CONTACT RESISTANCE: Below 10 m Ω typ. initial @ 2-4 V DC, 100 mA, for both silver and gold plated contacts.

INSULATION RESISTANCE: 10<sup>9</sup> Ω min.

DIELECTRIC STRENGTH: 1,000 Vrms min. @ sea level.

INDEXING: 90°:2 positions.

## Materials

LOCK: 6/6 nylon with matte finish (UL 94V-2), color black, 5 tumbler, single bitted lock with integral detent mechanism.

KEYS: Two nickel plated brass keys with black plastic head, other colors available.

SWITCH HOUSING: 6/6 nylon (UL 94V-2).

CONTACTS & TERMINALS: Q contact material: Copper, silver plated. See page L-28 for additional contact materials.

**NOTE:** Any models supplied with Q or B contact material are RoHS compliant.

**NOTE:** Specifications and materials listed above are for switchlocks with standard options. For information on specific and custom switchlocks, consult Customer Service Center.

## Build-A-Switch

To order, simply select desired option from each category and place in the appropriate box. Available options are shown and described on pages L-27 and L-28. For additional options not shown in catalog, consult Customer Service Center.



### Switch and lock Function

- PM0613** SP, 90°, Index, keypull pos. 1
- PM061U** SP, 90° Index, keypull pos. 1 & 3

### Keying

- E** Two nickel plated brass keys with insert molded plastic head

### Lock Type

- B** 5 Tumbler lock with detent

### Lock Finish

- M** Plastic lock with matte finish

### Terminations

- 05** Quick connect
- WC** Wire lead

### Lock Style

- K** Cone shaped facing

### Contact Material

- Q** Silver
- B** Gold

### Lock Color

- 2** Black

### Key Color

- 2** Black



Switchlock

# PM Series 5 Tumbler Miniature Snap-in Switchlocks

## SWITCH AND LOCK FUNCTION



NO. POLES	MODEL NO.	SWITCH FUNCTION		KEY PULL POSITIONS	LOCK CONFIGURATION	INDEXING
		POS. 1	POS. 2			
SP	PM0613	OFF	ON	Position 1		90°
	PM061U			Positions 1 & 2		
<b>SP</b> <p>Part number shown: PM0613EBM05KQ22</p>						

All models with all options when ordered with 'Q' contact material.

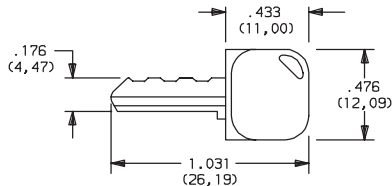
### LEGEND

- = Detent Position (90°)
- ⊙ = Key pull possible in these positions.
- ⊙ = Stop Positions

## KEYING



**E** TWO NICKEL PLATED BRASS KEYS WITH INSERT MOLDED PLASTIC HEAD

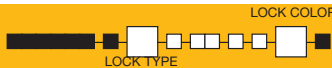


Key part number: 617D1004102

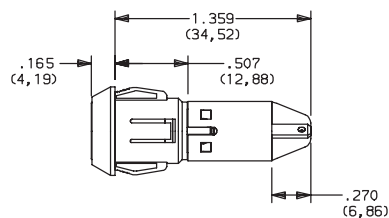
OPTION CODE	KEY COLOR
2	BLACK

**NOTE:** Molded plastic head color is black, standard. For more than one key code, replacement keys, or other special features, consult Customer Service Center.

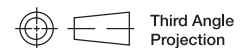
## LOCK TYPE



**B** 5 TUMBLER LOCK WITH DETENT



OPTION CODE	LOCK COLOR
2	BLACK



Third Angle Projection  
Dimensions are shown: Inch (mm)  
Specifications and dimensions subject to change

# PM Series 5 Tumbler Miniature Snap-in Switchlocks

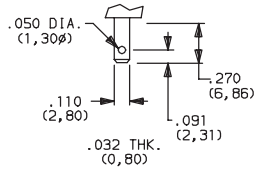
## LOCK FINISH

**M** PLASTIC LOCK WITH MATTE FINISH

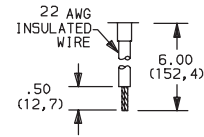


## TERMINATIONS

**05** QUICK CONNECT



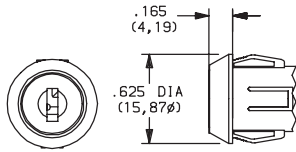
**WC** WIRE LEAD



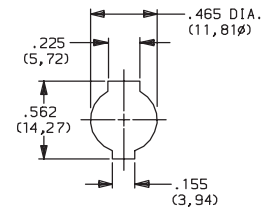
UL style 1015.  
Black wire standard, other colors and lengths available, consult Customer Service Center.

## LOCK STYLE

**K** CONE SHAPED FACING



**PANEL MOUNTING**



Panel thickness:  
.050-.080 (1,27-2,03)

## CONTACT MATERIAL

OPTION CODE	RoHS COMPLIANT*	RoHS COMPATIBLE*	CONTACT AND TERMINAL MATERIAL	RATING	
<b>Q</b>	YES	YES	SILVER <sup>2</sup>	POWER	4 AMPS @ 125 V AC or 28 V DC; 2 AMPS @ 250 V AC (UL/CSA)
<b>B</b>	YES	YES	GOLD <sup>1</sup>	LOW LEVEL/DRY CIRCUIT	0.4 VA MAX. @ 20 V AC or DC MAX.

\* Note: See Technical Data section of this catalog for RoHS compliant and compatible definitions and specifications.

<sup>1</sup> CONTACTS & TERMINALS: Copper, with gold plate over nickel plate.

<sup>2</sup> CONTACTS & TERMINALS: Copper, silver plated (standard with all termination options).

All models



with all options when ordered with 'Q' contact material.

Switchlock

## AVAILABLE HARDWARE

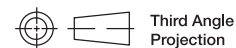


Key Code: 041

**PART NO. (ONE KEY)**

**617D1004102** BLACK

**Material:** Brass  
Finish: Nickel plate  
6/6 Nylon insert molded head



Dimensions are shown: Inch (mm)  
Specifications and dimensions subject to change



27 Jun 22