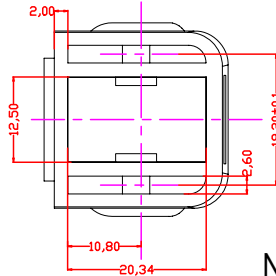
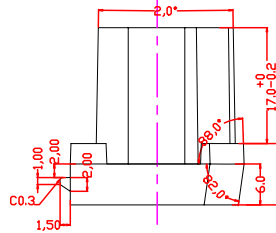
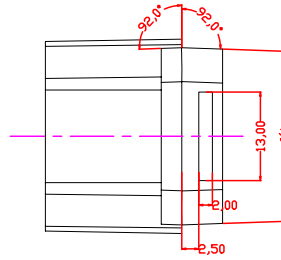
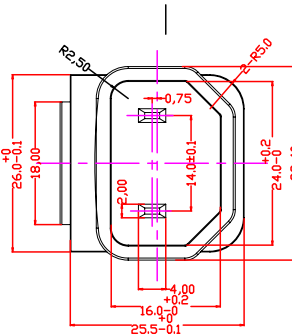
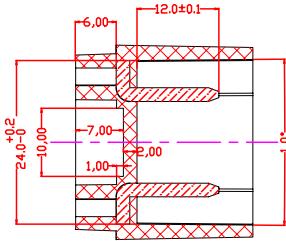
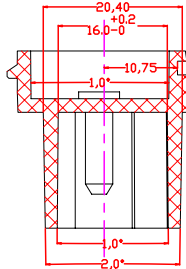
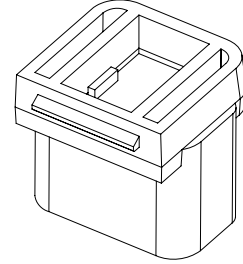
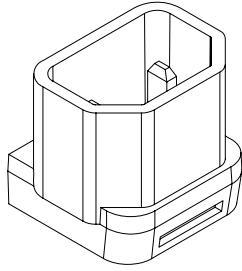



<b>PROPRIETARY INFORMATION:</b> PROPRIETARY OF GLOBTEK, INC. ANY REPRODUCTION, DISCLOSURE OR USE OF THIS DRAWING, IN WHOLE OR IN PART, IS HEREBY PROHIBITED EXCEPT AS SPECIFIED IN WRITING BY GLOBTEK, INC.	REVISION			
	REV	DESCRIPTION	DATE	APPROVED
	A	INITIAL RELEASE, RFS. 12913, BS	01/31/08	HM
	B	REVISE DRAWING, RFS. 13071, BS	02/28/08	HM
	C	REVISE DRAWING, RFS. 13758, BS	05/28/08	HM



NOTE: ALL DIMENSIONS ARE IN MILLIMETERS.

Foot Note: Globtek Inc. will not be liable for the safety and performance of these power supplies if unauthorized access and repair occurs. End user should consult applicable UL, CSA or EN standards for proper installation instructions	DASH NO.	PART NO	REV.	DESCRIPTION	NOTES
	<b>TABULATION BLOCK</b>				
Limitation of Use: Globtek product are not authorized for use as mission critical components in life support, hazardous environment, nuclear or aircraft applications without prior written approval from the CEO of Globtek Inc.	TOLERANCES: DECIMALS    ANGULAR .xx +/- 0.1    +/- 1° .xxx +/- .005		 <b>GlobTek, Inc.</b> www.globtek.com		186 Veterans Dr. Northvale, NJ 07647 Tel. 201-784-1000 Fax 201.784.0111
	INIT.BY:BS	DATE: 01/31/08			
Contents of this document are subject to change without prior notice	DRAWN: NF	DATE: 01/31/08	FSCN No.: G, CC	SIZE A	REV. C
	APRVD: HS	DATE: 01/31/08	SCALE: NONE	PART NO: <b>Q-C18(R)</b>	SHEET 1/ 1