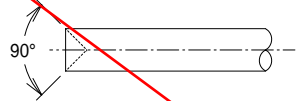
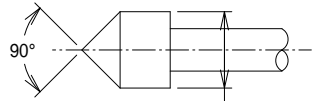


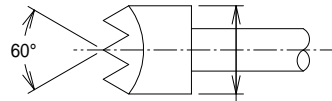
PROBE HEAD VARIANTS



HARWIN PART NO.
P19-1021



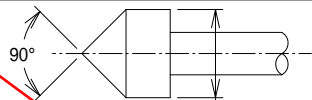
HARWIN PART NO.
P19-2121



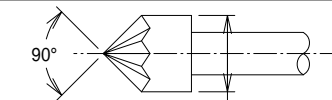
HARWIN PART NO.
P19-4021



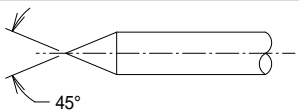
HARWIN PART NO.
P19-1121



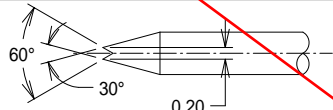
HARWIN PART NO.
P19-2221



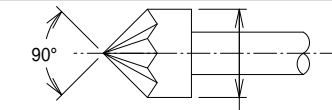
HARWIN PART NO.
P19-5021



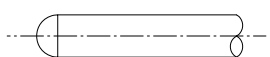
HARWIN PART NO.
P19-0121



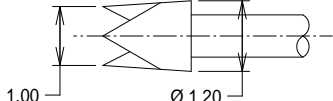
HARWIN PART NO.
P19-3021



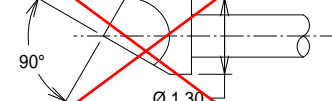
HARWIN PART NO.
P19-5121



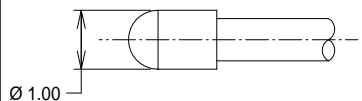
HARWIN PART NO.
P19-0221



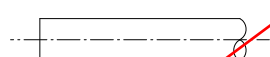
HARWIN PART NO.
P19-3321



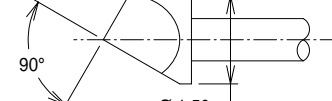
HARWIN PART NO.
P19-6021



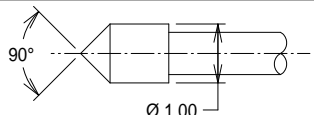
HARWIN PART NO.
P19-0321



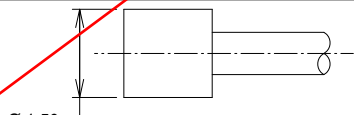
HARWIN PART NO.
P19-0521



HARWIN PART NO.
P19-6121



HARWIN PART NO.
P19-2021



HARWIN PART NO.
P19-0621

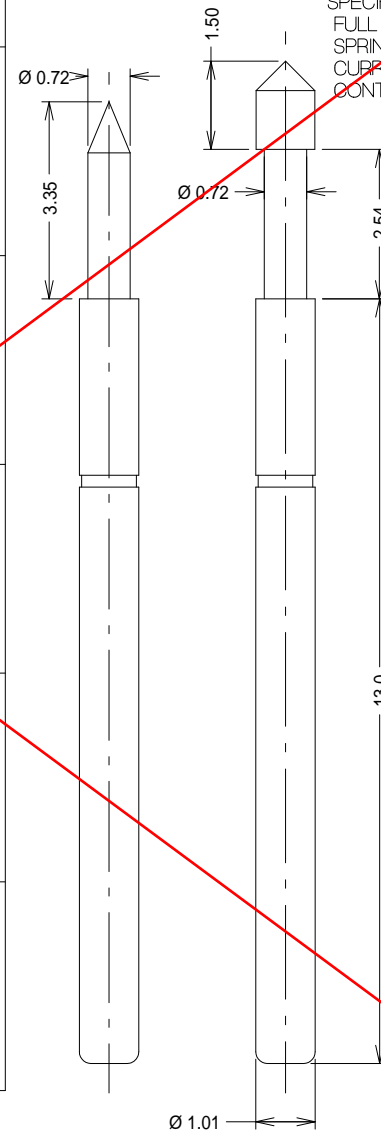
OBSOLETE

NOTES:

1. TO BE USED WITH SLEEVES S19-XX1.
2. MINIMUM CENTRES = 1.90mm.
3. MATERIALS AND FINISH:
 PLUNGER = HEAT TREATED BERYLLIUM COPPER,
 RHODIUM PLATED OVER HARD NICKEL
 BARREL = PHOSPHOR BRONZE, GOLD PLATED
 SPRING = MUSIC WIRE, GOLD PLATED

SPECIFICATIONS:

- FULL TRAVEL = 2.54mm
- SPRING FORCE = 120N (128g) @ 2.54mm
- CURRENT RATING = 3 AMPS
- CONTACT RESISTANCE = 50 MILLIOHMS



ORDER CODE:
P19-XX21
PROBE HEAD
VARIANT (SEE TABLE)

CUSTOMER
INFORMATION
SHEET

1	14.01.97	----
ISS.	DATE	C/N
APPROVED:		
CHECKED:		
DRAWN: W. BOURNE		
CUSTOMER REF.		
ASSEMBLY DRG:		



HARWIN INC U.S.A. TEL: (812) 285 0055 FAX: (812) 285 0056	HARWIN PLC U.K. TEL: 01705 370451 FAX: 01705 314590	HARWIN PTE SINGAPORE TEL: 65 7794909 FAX: 65 7793868	HARWIN CONNECTORS KOREA TEL: 822 521 0747 FAX: 822 521 0749
--	--	---	--

TOLERANCES
 X. = ±1mm
 XX = ±0.25mm
 XXX = ±0.10mm
 XXXX = ±0.01mm
 ANGLES = ±1°
 UNLESS STATED

MATERIAL:	SEE NOTE 3
FINISH:	SEE NOTE 3
S/AREA:	mm

TITLE:	1.90mm MIN. CENTRE TWO-PIECE SPRING PROBE
DRAWING NUMBER:	P19-XX21