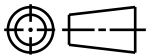
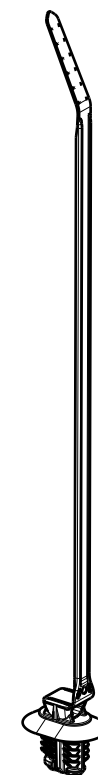
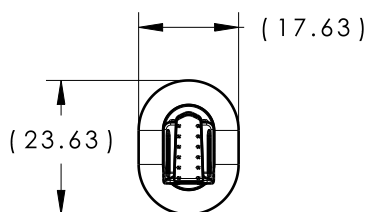
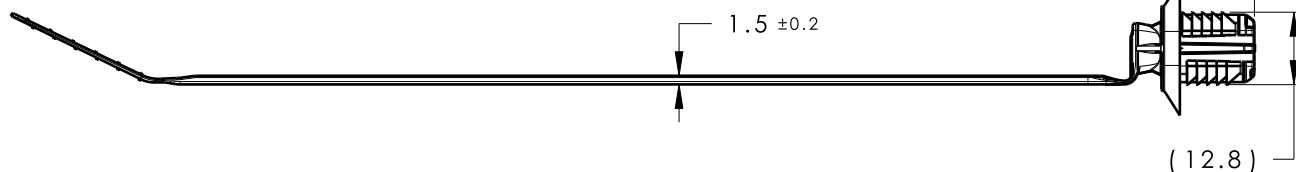
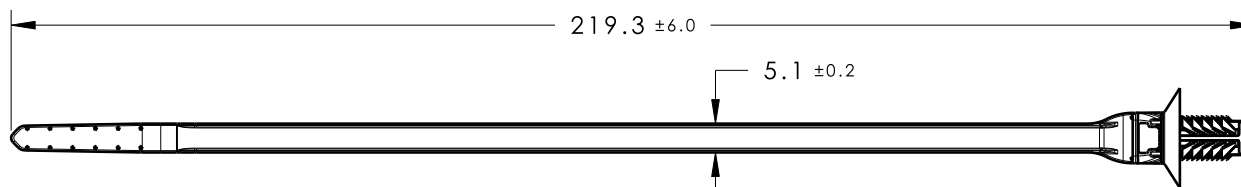


CATIA V5



Revision Level		Revision Record	Changed	Date	Approved	Date
Drawing	Part					
01.00	A	SEE ECN# 012597				



ISOMETRIC VIEW  
SCALE 1:2

- REFERENCE:  
PERFORMANCE REQUIREMENTS AT DRY AS MOLDED:
1. FIR TREE PUSH IN FORCE: 45 NEWTONS (10 LBS) MAX IN THE APPLICABLE NOMINAL HOLE SIZE AND A PLATE THICKNESS OF 1.8mm.
  2. FIR TREE PULL OUT FORCE: 110 NEWTONS (25 LBS) MIN IN THE APPLICABLE NOMINAL HOLE SIZE AND A PLATE THICKNESS OF 1.8mm.
  3. SHEET METAL THICKNESS RANGE: 0.60mm - 6.0mm
  4. APPLICABLE HOLE SIZE:
    - A. 6.2 X 12.2mm
    - B. 6.5 X 12.5mm
    - C. 6.5 X 13.0mm
    - D. 7.0 X 12.0mm
  5. CABLE TIE MIN LOOP TENSILE STRENGTH: 225 NEWTONS (50 LBS)
  6. BUNDLE RANGE: 2.0mm TO 50mm

Material PA66HIRHS COLOR: BLACK	Units	millimeters	Drawn	SJA	3/4/14	Article/Type-No	T50ROSFTOVALR	Scale	3:4
	Tolerance defined on each dimension	The copyright of this drawing is reserved by HellermannTyton. It is issued on condition that it is not reproduced, copied or disclosed to a third party, either wholly or in part, without the consent of HellermannTyton.	Approved	EJH	3/4/14	Title	ONE PIECE 50LB CABLE TIE WITH OVAL FIR TREE	Project Number	11-0741
			<b>HellermannTyton</b> North America Email: corp@htamericas.com Web: www.hellermann.tyton.com			Drawing-No	PRODUCTION : Phase	Format	AH
						<b>11-0741-001-CSU</b>		Sheet	1/1