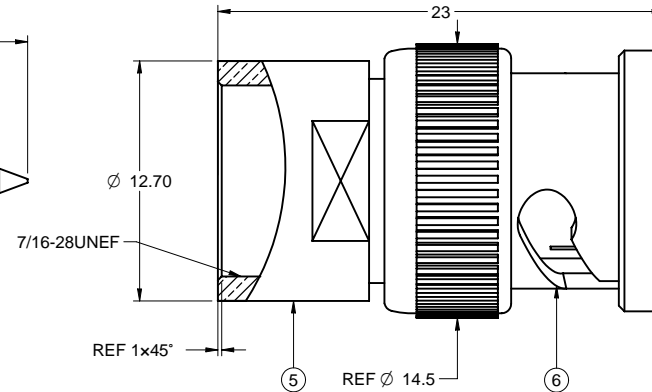
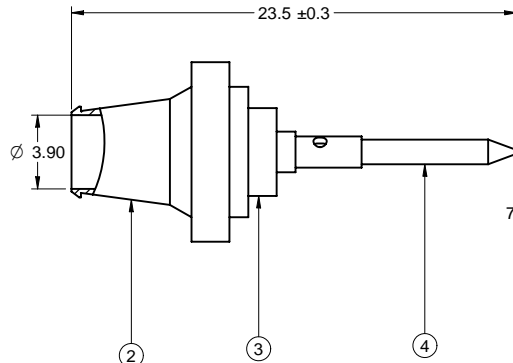
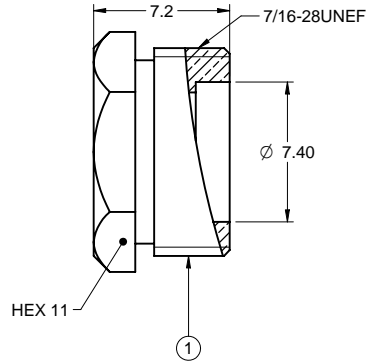


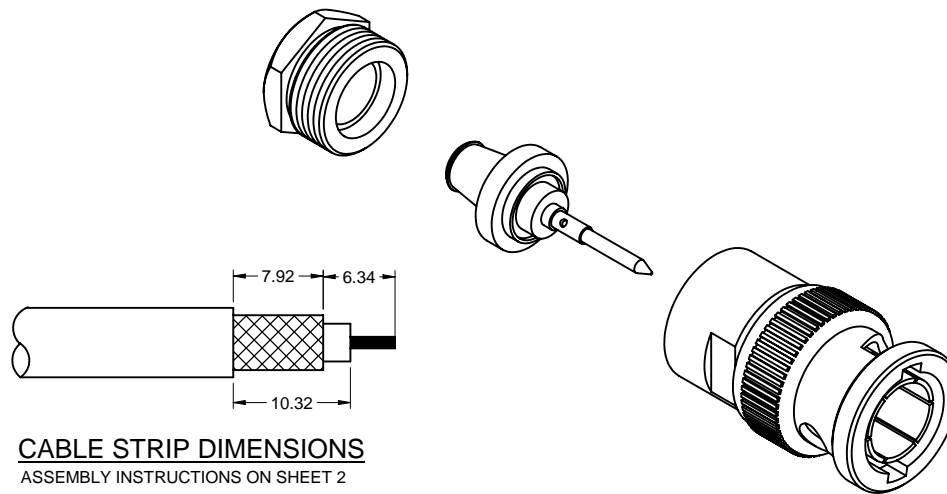
	5			4		3		2		1	
PART NUMBER	ITEM ① NUT	ITEM ② TAPER RING	ITEM ③ PLASTIC COVER	ITEM ④ CONTACT	ITEM ⑤ BODY	ITEM ⑥ NUT					DRAWING NO. 28-90237
28-90237	BRASS NICKEL PLATED	BRASS SILVER PLATED	PLASTIC NATURE	BRASS GOLD PLATED	BRASS NICKEL PLATED	ZINC NICKEL PLATED					REVISIONS

REVISIONS					
A	RELEASE FOR QUATION				
	12-30-05	W	W	T	
B	ADD SOME DIM. OF SLEEVE ADD DIM. REF Ø14.5 ADD NOTES 4 & 5				
	12-25-06	Z	L	T	



NOTES:

- ELECTRICAL CHARACTERISTICS**
 IMPEDANCE: 75 OHM NOMINAL
 FREQUENCY RANGE: 0-4 GHZ
 WORKING VOLTAGE: 500 VOLTS RMS AT SEA LEVEL
 DIELECTRIC WITHSTANDING VOLTAGE: 1500 VOLTS RMS AT SEA LEVEL
 CORONA LEVEL: 375 VOLTS MINIMUM AT 70,000 FEET
 CONTACT RESISTANCE: OUTER - 0.2 MILLIOHMS MAXIMUM
 CENTER - 2.1 MILLIOHMS
 MAXIMUM INSULATION RESISTANCE: 5000 MEGOHMS MINIMUM
- ENVIRONMENTAL CHARACTERISTICS**
 RECOMMENDED TEMPERATURE RANGE: -55OC TO +85OC
 MOISTURE RESISTANCE: MIL-STD-202
- MECHANICAL CHARACTERISTICS**
 DURABILITY: 500 CYCLES
 FORCE TO ENGAGE/DISENGAGE: 3 LBS. MAXIMUM
 CABLE RETENTION: 20 LBS., RG-58 C/U CABLE
- PRODUCT SHOULD BE RoHS COMPLIANCE**
- PACKAGING REQUIREMENT FOLLOWS ENGINEERING DOCUMENT P/N 836-40200001XX.**



THIS DRAWING TO BE INTERPRETED PER ANSI Y 14.5M - 1994

COMPANY CONFIDENTIAL

TOLERANCE UNLESS OTHERWISE SPECIFIED		DRAWN BY GARY.ZHG	DATE 12-25-06
DECIMALS	mm	CHECKED BY LINDA.WU	DATE 12-25-06
X	+ 0.5	APPROVED BY THOMAS	DATE 12-25-06
X.X	+ 0.2		
X.XX	+ 0.1		
ANGLES	+ 0.5°	U/M	mm

EMERSON Network Power		Connectivity Solutions	
TITLE 75 OHM BNC 3PC CRIMP RG59			
SHEET 1 OF 2	DRAWING NO. 28-90237	SIZE C	

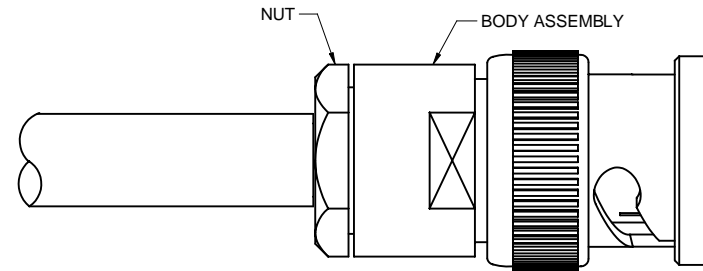
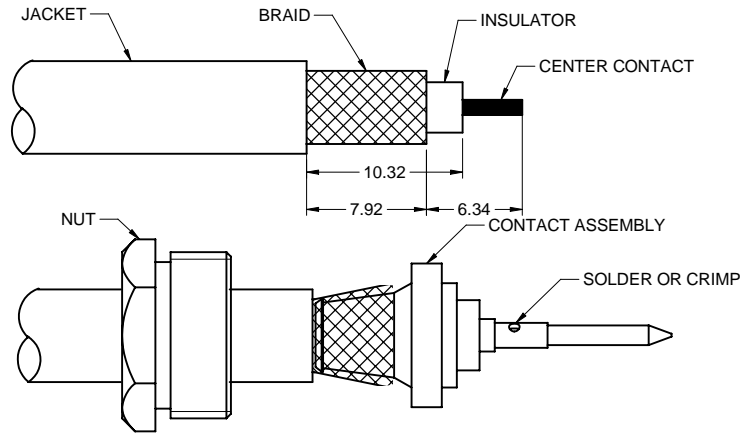
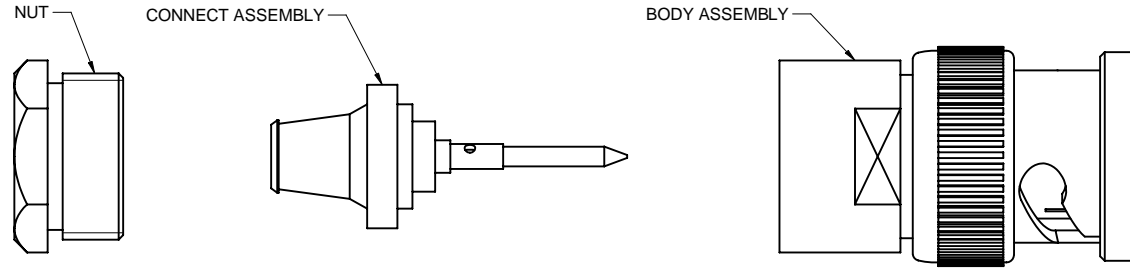
THIS DRAWING WAS PRODUCED BY COMPUTER. DO NOT SCALE DRAWING OR UPDATE MANUALLY.

D
C
B
A

D
C
B
A

PART NUMBER	CABLE	TOOL
28-90237	RG-59&62	24-8789P

DRAWING NO. 28-90237	
REVISIONS	
A	RELEASE FOR QUTATION 12-30-05 W W T
VERSION UPDATE	
B	12-25-06 Z L T



ASSEMBLY INSTRUCTIONS

1. TRIM CABLE AS SHOWN.TAKING CARE NOT TO NICK THE INNER CONDUCTOR OR BRAID.
2. RUN NUT OVER THE CABLE,AND FLAIR THE BRAID OVER THE FERRULE.SOLDER THE CONTACT TO THE CENTER CONDUCTOR.
3. PUSH THE CENTER CONTACT HOME INTO THE BODY ASSY.,FELLING IT SNAP INTO PLACE,AND WITH ALL THE LOOSE COMPONENTS IN PLACE COMPLETE THE ASSEMBLY BY WRENCH TIGHTENING THE NUT

THIS DRAWING TO BE INTERPRETED PER ANSI Y 14.5M - 1994

COMPANY CONFIDENTIAL

TOLERANCE UNLESS OTHERWISE SPECIFIED		DRAWN BY GARY.ZHG	DATE 12-25-06
DECIMALS	mm	CHECKED BY LINDA.WU	DATE 12-25-06
X	+ 0.5	APPROVED BY THOMAS	DATE 12-25-06
X.X	+ 0.2		
X.XX	+ 0.1		
ANGLES	+ 0.5°	U/M	mm

EMERSON
Network Power

Connectivity Solutions

TITLE
75 OHM BNC 3PC CRIMP RG59

THIS DRAWING WAS PRODUCED BY COMPUTER, DO NOT SCALE DRAWING OR UPDATE MANUALLY.

SHEET 2 OF 2	DRAWING NO. 28-90237	SIZE C
-----------------	-------------------------	-----------

Mouser Electronics

Authorized Distributor

Click to View Pricing, Inventory, Delivery & Lifecycle Information:

[Cinch Connectivity Solutions:](#)

[28-90237](#)