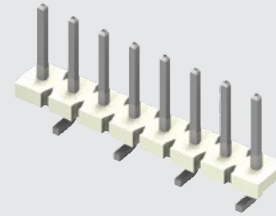


HPW-06-04-T-S-350-150



HPM-04-01-T-S

HPM, HPW SERIES

(5.08 mm) .200"

POWER HEADERS & BOARD STACKERS

SPECIFICATIONS

For complete specifications see www.samtec.com?HPM

Insulator Material: Glass Filled Polyester (TH)
Natural Liquid Crystal Polymer (SMT)
Terminal Material: Copper Alloy
Plating: Sn over 50 μ" (1.27 μm) Ni
Operating Temp Range: -55 °C to +105 °C
Voltage Rating: 850 VAC/1200 VDC
Standard Creepage: (3.94 mm) .155"
Standard Clearance: (3.94 mm) .155"
RoHS Compliant: Yes

PROCESSING

Lead-Free Solderable: Surface Mount: Yes
Through-hole & Right-angle: Wave only
SMT Lead Coplanarity: (0.20 mm) .008" max (-02-15)
(0.25 mm) .010" max (16-20)

RECOGNITIONS

For complete scope of recognitions see www.samtec.com/quality



TYPE STRIP

NO. PINS

LEAD STYLE

PLATING OPTION

S

TAIL OPTION

OTHER OPTION

HPM
= High Temp High Power Header

Mates with:
HPF

HPF/HPM	
PINS	CURRENT RATING (PER CONTACT)
1	16.6 A
2	14.4 A
3	13.2 A
4	12.7 A
20	8.9 A

Note: Some lengths, styles and options are non-standard, non-returnable.

-T
= Matte Tin

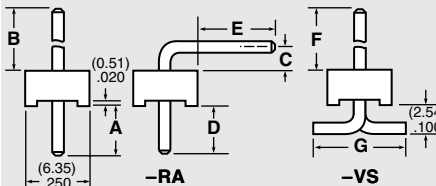
Leave blank for Through-hole

-RA
= Right-angle (-02 & -04 lead style only)

-VS
= Surface Mount (2 pins/row minimum) (-01 & -02 lead style only)

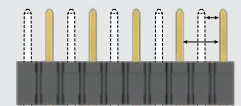
-P
= Pick & Place Pad (3 Pos. min.) (-VS only) (Not Available with -05 lead style)

Specify LEAD STYLE from chart below.



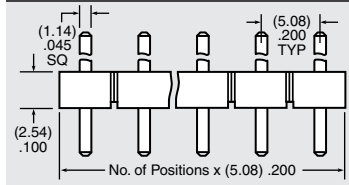
LEAD STYLE	A	B	C	D	E	F	G
-01	(4.57) .180	(11.94) .470	—	—	—	(10.72) .422	(8.64) .340
-02	(4.57) .180	(13.21) .520	(2.54) .100	(4.57) .180	(8.08) .318	(12.24) .482	(8.38) .330
-04	(4.09) .161	(21.06) .829	(4.95) .195	(3.96) .156	(13.82) .544	—	—
-05	(4.57) .180	(3.81) .150	—	—	—	—	—

CREEPAGE AND CLEARANCE



Selectively loading contacts achieves customer specific creepage and clearance requirements.
Contact asp@samtec.com

01 thru 20



SPECIFICATIONS

For complete specifications see www.samtec.com?HPW

Insulator Material: Liquid Crystal Polymer
Terminal Material: Copper Alloy
Plating: Sn over 50 μ" (1.27 μm) Ni
Operating Temp Range: -55 °C to + 105 °C
Standard Creepage: (3.94 mm) .155"
Standard Clearance: (3.94 mm) .155"
RoHS Compliant: Yes

PROCESSING

Lead-Free Solderable: Yes
SMT Lead Coplanarity: (0.20 mm) .008" max.

RECOGNITIONS

For complete scope of recognitions see www.samtec.com/quality



TYPE STRIP

NO. PINS

04

PLATING OPTION

S

STACK HEIGHT

POST HEIGHT

TAIL OPTION

HPW
= High Temp High Power

Mates with:
HPF

-T
= Matte Tin

Note: Some lengths, styles and options are non-standard, non-returnable.

-“XXX”
= Stacker Height (in inches) (0.13 mm) .005" increments
Example: -250 = (6.35 mm) .250"

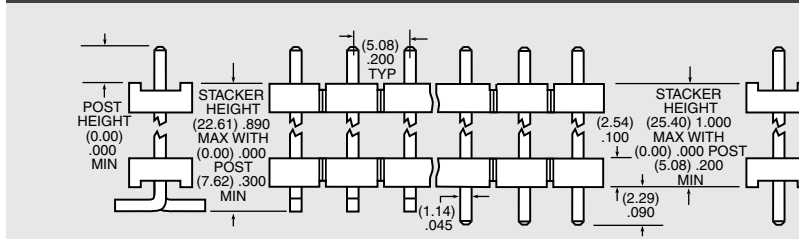
-“XXX”
= Post Height (in inches)

Leave blank for Through-hole

-VS
= Surface Mount (2 pins/row minimum)

-P
= Pick & Place Pad (3 Pos. min.) (6.98 mm) .275" max. post height (-VS only)

02 thru 20



Due to technical progress, all designs, specifications and components are subject to change without notice.

WWW.SAMTEC.COM

All parts within this catalog are built to Samtec's specifications. Customer specific requirements must be approved by Samtec and identified in a Samtec customer-specific drawing to apply.