

TT Motor Pulley - 36mm Diameter

PRODUCT ID: 3789

OUT OF STOCK

Please enter your details below and we will send you an email when this item is back in stock. You will only be emailed about this product!

YOUR NAME

YOUR EMAIL

NOTIFY ME

ADD TO WISHLIST

[DESCRIPTION](#)

[TECHNICAL DETAILS](#)

[LEARN](#)



DESCRIPTION

Mechanical transmission for the win, this simple plastic pulley can attach to your TT motor to transmit rotation from the motor axle to...somewhere else.

This is a very useful part when you require more than wheels for your robotics project. A belt and pulley solution can be light-weight and very efficient.

This **TT Motor Pulley** has a slot for fitting onto our DC gearbox motors and even comes with a mounting screw for secure attachment. A belt is not included, you could use a rubber band,

twine, yarn or any other strong and flexible material with a 2mm diameter.

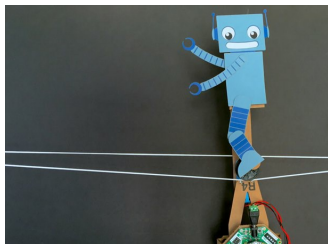
TECHNICAL DETAILS

- Weight: 1.8g
- Center hole diameter: 2mm (2mm shaft), opposite flat slot for TT motors
- Side hole diameters: 8 x 2mm (nominal, may have some slight variation)
- Adjacent hole distance: 5mm
- Slot diameter: 2mm

Product Dimensions: 36.0mm x 36.0mm x 4.0mm / 1.4" x 1.4" x 0.2"

Product Weight: 1.8g / 0.1oz

LEARN



[Tightrope Unicycle Bot](#)

Step right up and build a robot that rides a unicycle on a tightrope!



[AdaBox 008](#)

Explore and use the contents of your AdaBox 008



[Stroboscopic Zoetrope](#)

Use blinking light to animate spinning faces, all synced up by Crickit!

MAY WE ALSO SUGGEST...



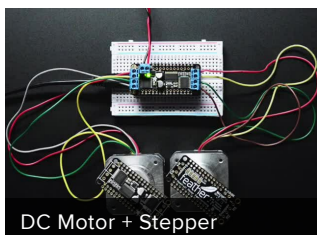
Orange and Clear TT Motor



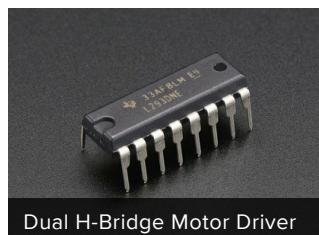
DC Gearbox Motor - "TT"



Thin White Wheel for TT DC



DC Motor + Stepper



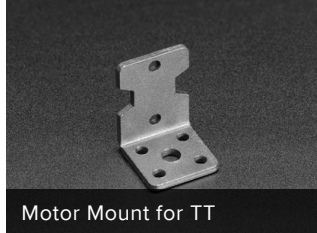
Dual H-Bridge Motor Driver



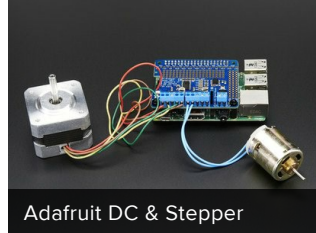
Snap-on Hub for TT Motor



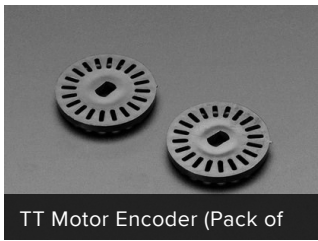
Skinny Wheel for TT DC



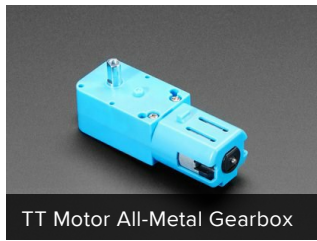
Motor Mount for TT



Adafruit DC & Stepper



TT Motor Encoder (Pack of 2)



TT Motor All-Metal Gearbox



TT Motor Bi-Metal Gearbox -

DISTRIBUTORS [EXPAND TO SEE DISTRIBUTORS](#)

[CONTACT](#)

[SUPPORT](#)

[DISTRIBUTORS](#)

[EDUCATORS](#)

[JOBS](#)

[FAQ](#)

[SHIPPING & RETURNS](#)

[TERMS OF SERVICE](#)

[PRIVACY & LEGAL](#)

[ABOUT US](#)

"The economy of human time is the next advantage of machinery in manufactures" - Charles Babbage

ENGINEERED IN NYC [Adafruit](#)®



4.9 ★★★★★
Google
Customer Reviews