

Adafruit Metro 328 Starter Pack

PRODUCT ID: 68

OUT OF STOCK

Please enter your details below and we will send you an email when this item is back in stock. You will only be emailed about this product!

YOUR NAME

YOUR EMAIL

NOTIFY ME

ADD TO WISHLIST

DESCRIPTION

TECHNICAL DETAILS



DESCRIPTION

Heard about [Arduino IDE-compatibles](#) but not sure how to start? The Adafruit Metro is an ATmega328-based (like *a lot* of our own products) development board. Since it is shaped the same, and code/shield-compatible with the Arduino UNO R3 design, our Adafruit Metro is easy to use and hacker friendly and this is the perfect beginner kit for learning how to use the Adafruit Metro!

This bundle is designed to get you started quickly and easily on your path of learning electronics. Once you've received your starter pack you can follow the [introductory tutorials here on my site](#), designed for everyone, even people with little or no electronics and programming experience. The starter pack has everything you need (except tools) for most of the lessons.

It includes:

- [Adafruit Metro 328 w/ Headers](#) - The Adafruit Metro - assembled and ready to go, including 4 rubber feet
- [MicroUSB Cable](#) - Perfect for connecting your Metro to a computer
- [Protoshield Kit](#) - Get hacking with the best prototyping shield out there!

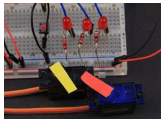
switching regulator is efficient and small and works with US (110V) and European (220V) power.

- [9V DC regulated wall adapter](#) - You can power your Metro from any wall socket. This switching regulator is efficient and small and works with US (110V) and European (220V) power.
- [9V Battery case with switch and a 2.1mm plug](#) - so you can power your Metro using a 9V battery. This case is much sturdier than just a battery clip and it has an on/off switch too! Note that this comes unassembled
- [Tutorial starter pack parts](#) - Includes a **10K potentiometer**, **1K potentiometer**, **2 small pushbuttons**, **5 red diffused bright LEDs**, one each of red, green and blue ultra-bright LED, **5 100 ohm resistors**, **5 1K resistors**, **5 10K resistors**, and a **CdS photocell sensor**.
- Also includes [65 flexible breadboard wires](#) in 8 colors, perfect for use with the solderless breadboard.

TECHNICAL DETAILS

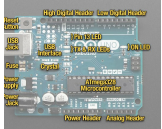
We have tons of [Arduino-compatible tutorials on the Adafruit Learning System](#) too!

LEARN



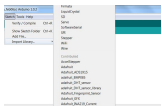
[Multi-tasking the Arduino - Part 1](#)

Make your Arduino walk and chew gum at the same time.



[Ladyada's Learn Arduino - Lesson #0](#)

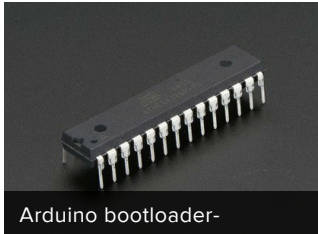
Hi There!



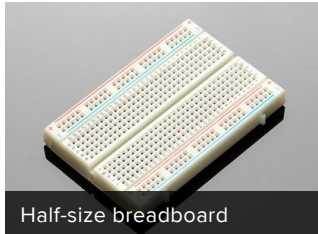
[All About Arduino Libraries](#)

How to install and use Arduino Libraries

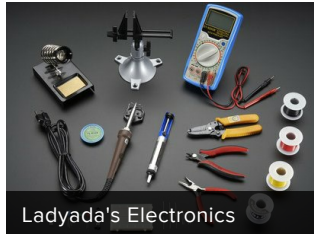
MAY WE ALSO SUGGEST...



Arduino bootloader-



Half-size breadboard



Ladyada's Electronics



Motor party add-on pack for



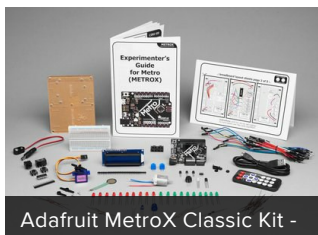
Learn Electronics with



Adafruit Metro 328 Starter



Adafruit Parts Pal



Adafruit MetroX Classic Kit -



1Sheeld+ for iOS and



Flotilla Mega Treasure



Budget Pack for Metro 328 -



Clear Enclosure for Arduino

[CONTACT](#)

[SUPPORT](#)

[DISTRIBUTORS](#)

[EDUCATORS](#)

[JOBS](#)

[FAQ](#)

[SHIPPING & RETURNS](#)

[TERMS OF SERVICE](#)

[PRIVACY & LEGAL](#)

[ABOUT US](#)

*"The master in the art of living
makes little distinction between...
work and play" - [L. P. Jacks](#)*

ENGINEERED IN NYC [Adafruit](#)®



4.9 ★★★★★
Google
Customer Reviews